



Quick Facts

- Community Area: Brandon
Project Type: Intersections
Current Project Phase: Design
Commissioner District: District 4



Estimated Project Schedule

- Project Development (Planning) Completion - Early 2019
Design/Land Acquisition Completion - Mid 2022
Procurement Completion - Mid 2022
Construction Duration - Late 2022 to Mid 2023
Closeout - Late 2023

Project Cost Estimate

- Total: \$3,448,199
Planning: \$0
Design and Land: \$403,579
Construction: \$3,044,620

This project was formerly CIP # 69659003. May include: Financing

Project Description

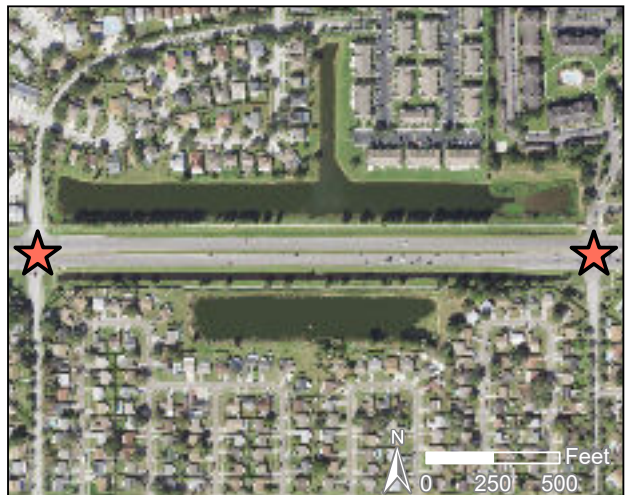
- Intersection improvements including, but not limited to, conversion of two-way stop intersection to a signalized intersection, extension of eastbound left turn lane at Kensington Ridge Blvd, and extension of westbound left turn lane at Paddock Club Drive.
Sidewalks will be added or replaced to improve pedestrian connectivity through the corridor specifically, ADA ramps, curbing and pavement markings.

Project Objectives

- Improve transportation mobility and safety for vehicles and pedestrians.
Upgrade existing transportation facilities, including retrofitting for Americans with Disability Act, or ADA compliance, to provide services that improve access for all users.

Questions?

Workman, Stefanie
Project Manager
(813) 635-5400



NOTE: Every reasonable effort has been made to assure the accuracy of this map. Hillsborough County does not assume any liability arising from use of this map. THIS MAP IS PROVIDED WITHOUT WARRANTY OF ANY KIND, either expressed or implied, including, but not limited to, the implied warranties of merchantability and fitness for a particular purpose.
SOURCES: This map has been prepared for the inventory of real property found within Hillsborough County and is compiled from recorded deeds, plats, and other public records; it is based on BEST AVAILABLE data.
Users of this map are hereby notified that the aforementioned public primary information sources should be consulted for verification of the information contained on this map.