



Quick Facts

- Community Area: East Hillsborough
- Project Type: Fire Services
- Current Project Phase: Design
- Commissioner District: District 4



Estimated Project Schedule

- Project Development (Planning) Completion - Early 2026
- Design/Land Acquisition Completion - Early 2027
- Procurement Completion - Mid 2027
- Construction Completion - Late 2028

Project Cost Estimate

- Total: \$12,400,000
- Planning: \$0
- Design and Land: \$1,381,488
- Construction: \$11,018,512

Funding Source

May include: General Revenue, (Undetermined - Construction)

Project Description

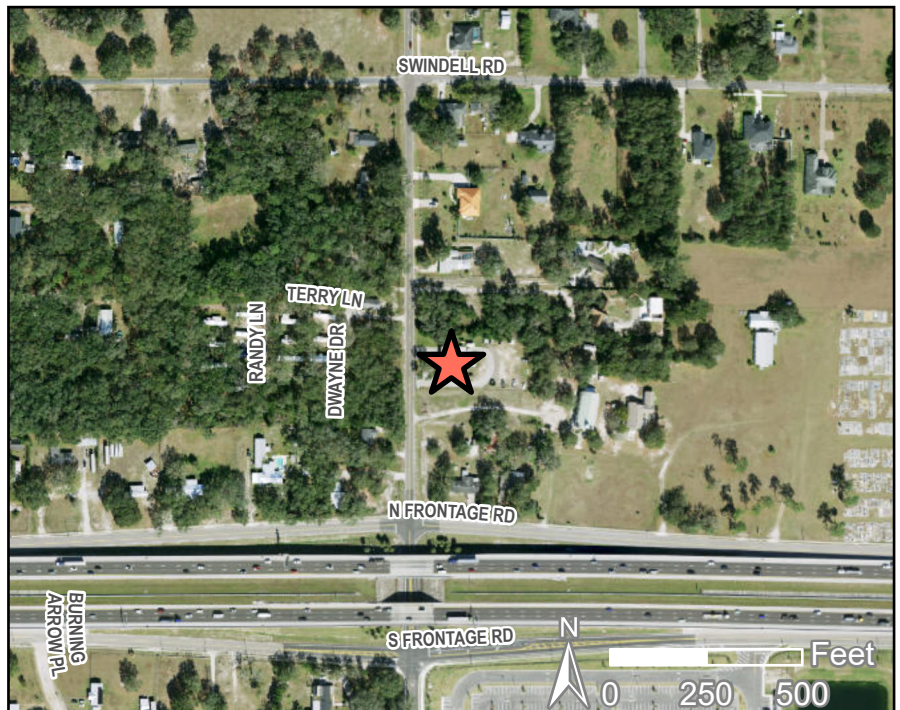
- Land acquisition, design and construction of a new 2-Bay fire station to replace the existing Midway Fire Station located at 2526 Charlie Taylor Road in Plant City.

Project Objectives

- Replace existing fire station that is at or near the end of its useful life and is outdated in its design.

Questions?

Mario Bowleg
Project Manager
(813) 635-5400



NOTE: Every reasonable effort has been made to assure the accuracy of this map. Hillsborough County does not assume any liability arising from use of this map. THIS MAP IS PROVIDED WITHOUT WARRANTY OF ANY KIND, either expressed or implied, including, but not limited to, the implied warranties of merchantability and fitness for a particular purpose.

SOURCES: This map has been prepared for the inventory of real property found within Hillsborough County and is compiled from recorded deeds, plats, and other public records; it is based on BEST AVAILABLE data.

Users of this map are hereby notified that the aforementioned public primary information sources should be consulted for verification of the information contained on this map.